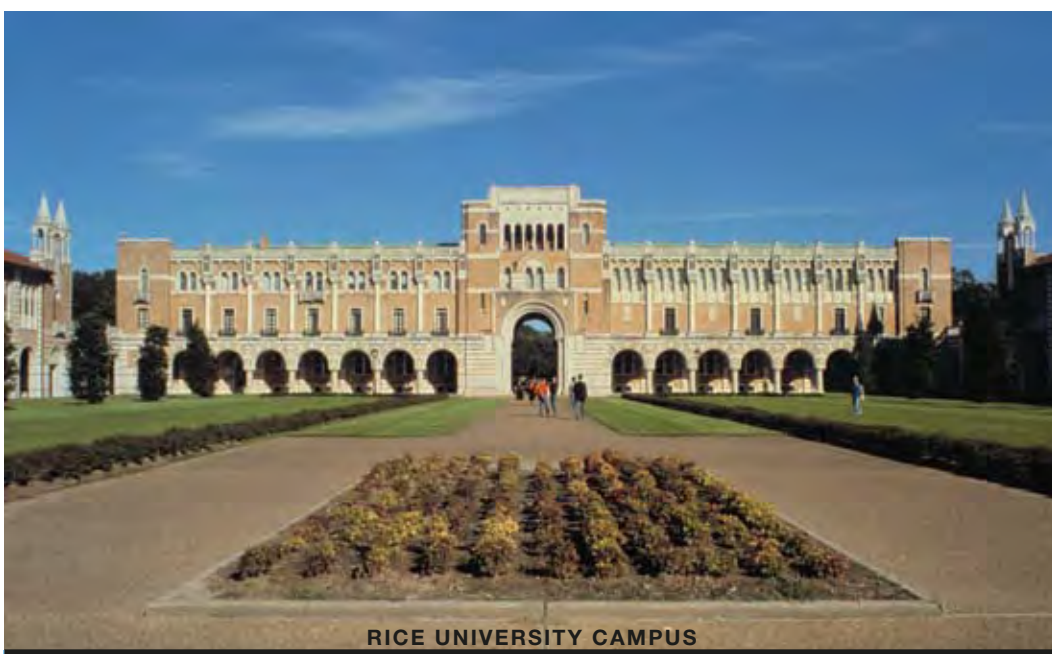


GRADUATE PROGRAM IN ART HISTORY

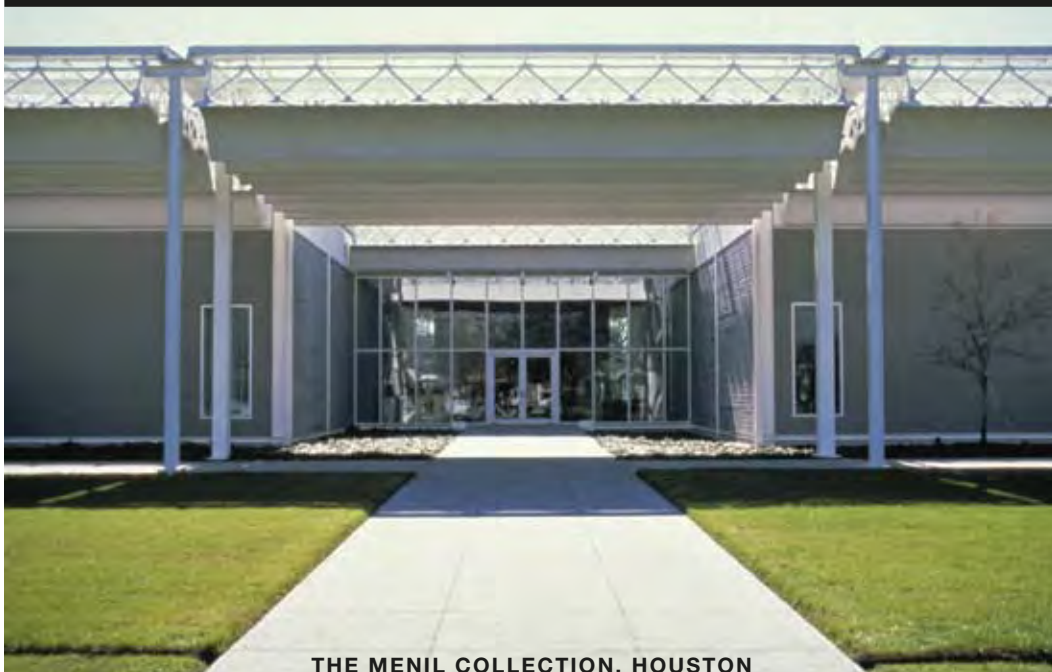
Rice University is initiating a doctoral program that will train students for academic research and teaching, curatorial positions, and other careers in the visual arts. The program begins in the Fall of 2009. Students will have the opportunity to learn not only from the faculty members in the Department of Art History, but also from affiliated professors in other disciplines and from the outstanding collections and curators of the Museum of Fine Arts, Houston and the Menil Collection, who will be our educational partners. Working from a range of theoretical positions, our faculty includes specialists in the art of the Americas, Europe, Africa, and Asia, whose research and teaching covers periods from antiquity to the present. As members of a department defined by a vitally important subject rather than a single methodology, our faculty brings a disciplinary breadth and depth to the study of art.



RICE UNIVERSITY CAMPUS



THE MUSEUM OF FINE ARTS, HOUSTON



THE MENIL COLLECTION, HOUSTON

GRADUATE PROGRAM FACULTY

GRAHAM BADER, Ph.D. Harvard University. Assistant Professor. Modern and contemporary European and American art.

LEO COSTELLO, Ph.D. Bryn Mawr College. Assistant Professor. 18th–20th century European art.

SHIRINE HAMADEH, Ph.D. MIT. Assistant Professor. Islamic/Middle Eastern art and architecture.

SHIH-SHAN SUSAN HUANG, Ph.D. Yale University. Assistant Professor. Medieval Chinese art and religion.

GORDON HUGHES, Ph.D. Princeton University. Assistant Professor. Modern and contemporary European and American art.

FRANCESCA LEONI, Ph.D. Princeton University. Postdoctoral Fellow in Art History, in collaboration with the Museum of Fine Arts, Houston. Middle Eastern/Islamic art.

JOSEPH MANCA, Ph.D. Columbia University. Nina J. Cullinan Professor of Art and Art History. Renaissance and Baroque art in Europe; early American art and architecture.

LINDA NEAGLEY, Ph.D. Indiana University. Associate Professor. Medieval art and architecture.

LIDA OUKADEROVA, Ph.D. University of Texas at Austin. Visiting Assistant Professor of Film Studies; Russian and German film and literature.

CAROLINE QUENEMOEN, Ph.D. Yale University. Assistant Professor. Classical Greek and Roman art and architecture.

DIANE WOLFTHAL, Ph.D. New York University, Institute of Fine Arts. David and Caroline Minter Professor of the Humanities. Late medieval and early modern Europe; Jewish Studies; and Gender Studies.

The doctoral program at Rice University is fortunate to have a group of curators at the Menil Collection and the Museum of Fine Arts, Houston who will teach and team-teach courses, make their collections available for study, oversee fellowships at their institutions, and serve as secondary readers on our doctoral committees.

In addition to studying with the faculty from the Department of Art History, graduate students can take courses with other scholars at Rice who are engaged in the study of art history, architectural history, film, aesthetics, literary history and theory, and other aspects of visual culture. These Rice professors can also serve as secondary readers on committees for doctoral thesis in art history.

For the program's full list of affiliated faculty, please visit the website at arthistory.rice.edu.

For applications, or more information, visit our web site, <http://arthistory.rice.edu> or contact Lucinda Cannady, Department Coordinator
Department of Art History
Rice University, Houston, Texas
arthist@rice.edu

713-348-4276

RICE UNIVERSITY®



AFFILIATED FACULTY

(from Rice University)

BERNARD ARESU, Ph.D. University of Washington, Professor, French Studies. Twentieth-century French literature and art.

ELIAS BONGMBA, Ph.D. University of Denver, Associate Professor, Religious Studies. African art and religion.

STEVEN CROWELL, Ph.D. Yale University, Professor, Philosophy. Aesthetics.

TERRENCE DOODY, Ph.D. Cornell University, Professor, English.

CHARLES DOVE, Ph.D. Johns Hopkins University, Lecturer, Visual and Dramatic Arts. Film history.

FARES EL-DAHDAH, D.Des., Harvard University, Associate Professor, Architecture. Modern architecture.

STEPHEN FOX, BArch, Rice University, Anchorage Foundation, and Lecturer, School of Architecture. Modern architecture.

BEATRIZ GONZALEZ-STEPHAN, Ph.D. University of Pittsburgh, Professor, Spanish. Literature, visual culture, and film history.

JEAN-JOSEPH GOUX, Ph.D. University of Paris, Professor, French Studies. Twentieth-century literature and visual culture.

DEBORAH HARTER, Ph.D. University of California at Berkeley, Associate Professor, French Studies. Nineteenth-century literature and visual culture.

CHRISTOPHER HIGHT, Ph.D. University of London, Assistant Professor, Architecture. Architectural theory and history.

THAD LOGAN, Ph.D. Rice University, Lecturer, English. Nineteenth-century visual culture in Britain.

KIRSTEN OSTHERR, Ph.D. Brown University, Assistant Professor, English. Film history.

RICHARD SMITH, Ph.D. University of California at Davis, Professor, History. Chinese history and visual culture.

JENNY STRAYER, Ph. D. University of Iowa, University Curator. American studies.

SARAH WESTPHAL, Ph.D. Yale University, Associate Professor, German Studies. Medieval history and art.

GARY WIHL, Ph.D. Yale University, Dean of Humanities, and Professor, English. Nineteenth-century English literature and art theory.

AFFILIATED MUSEUM FACULTY

EDGAR PETERS BOWRON, Ph.D. New York University, Institute of Fine Arts, curator, Museum of Fine Arts, Houston, Renaissance-18th century art.

MICHAEL K. BROWN, M.A. University of Delaware, Wintherthur Program in Early American Culture, curator, Bayou Bend Collection, Museum of Fine Arts, Houston, Early American decorative art.

JAMES CLIFTON, Ph.D. Princeton University, curator, Museum of Fine Arts, Houston and Director, Blaffer Collection, Renaissance-18th century art.

JOSEF HELFENSTEIN, Ph.D. University of Bern, Director, Menil Collection, Modern art.

KATHERINE HOWE, M.A. State University of New York at Oneonta, Cooperstown Graduate Program, Director of Rienzi, and curator, Museum of Fine Arts, Houston, European and American decorative art.

EMILY BALLEW NEFF, Ph. D. University of Texas at Austin, curator, Museum of Fine Art, Houston. American art.

MARI CARMEN RAMIREZ, Ph.D. University of Chicago, Director, International Center of Art of the Americas, and curator, Museum of Fine Arts, Houston, Latin American art.

KRISTINA VAN DYKE, Ph.D. Harvard University, curator, Menil Collection. African art.

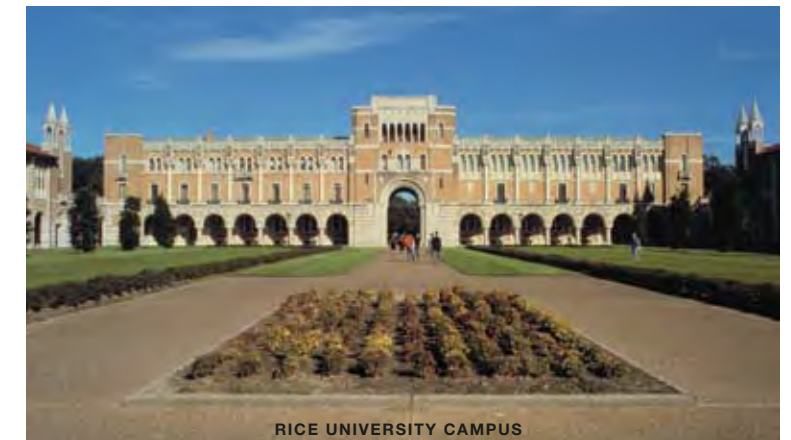


Michael Heizer, *45 degrees, 90 degrees, 180 degrees*, 1985, Rice University

For applications or more information, visit our web site <http://arthistory.rice.edu> or contact Lucinda Cannady, Department Coordinator, Department of Art History Rice University, Houston, TX • arthist@rice.edu • 713-348-4276

RICE UNIVERSITY®

GRADUATE PROGRAM IN ART HISTORY



RICE UNIVERSITY CAMPUS



THE MUSEUM OF FINE ARTS, HOUSTON



THE MENIL COLLECTION, HOUSTON

FALL 2009

RICE UNIVERSITY®



RICE UNIVERSITY is initiating a doctoral program that will train students for academic research and teaching, curatorial positions, and other careers in the visual arts. The program begins in the Fall of 2009. Students will have the opportunity to learn not only from the faculty members in the Department of Art History, but also from affiliated professors in other disciplines and from the outstanding collections and curators of the Museum of Fine Arts, Houston and the Menil Collection, who will be our educational partners. Working from a range of theoretical positions, our faculty includes specialists in the art of the Americas, Europe, Africa, and Asia, whose research and teaching covers periods from antiquity to the present. As members of a department defined by a vitally important subject rather than a single methodology, our faculty brings a disciplinary breadth and depth to the study of art.

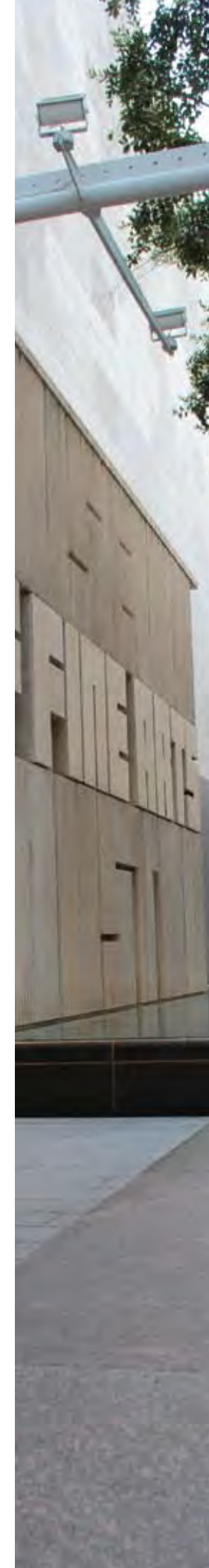
The Department of Art History's selective program will encourage interdisciplinary coursework and research through collaborative links between the department and its seventeen affiliated faculty who serve as curators in Houston or who teach visual and material culture in other departments at Rice. Our program also benefits from the rich visual culture of Houston. The Menil Collection has exceptional holdings in ancient, Byzantine, African, and modern and contemporary art. The Museum of Fine Arts,



Houston has an encyclopedic collection of art that includes Bayou Bend, with its collection of American decorative art and painting; the Blaffer Collection of Old Master paintings and prints; the Latin American collections and the affiliated International Center for the Art of the Americas; and an outstanding collection of modern and contemporary works.

The Fondren Library at Rice University has over five million books, including more than 150,000 titles in art history. The library contains an additional 275 art and art history journals, plus access to online journals. Furthermore, the nearby Museum of Fine Arts, Houston, houses another 85,000 titles, and the Menil Collection several thousand more. The department's Visual Resources Center has over 450,000 slides and an ever-growing collection of digital images, and offers access to ARTSTOR and Archivision licensed digital image collections.

In addition to studying with the faculty from the Department of Art History, graduate students can take courses with other scholars at Rice who are engaged in the study of art history, architectural history, film, aesthetics, literary history and theory, and other aspects of visual culture. These Rice professors can also serve as secondary readers on committees for doctoral theses in art history. Generous stipend and research travel support will be available.



GRADUATE PROGRAM FACULTY

GRAHAM BADER, Ph.D. Harvard University. Assistant Professor. Modern and contemporary European and American art.

LEO COSTELLO, Ph.D. Bryn Mawr College. Assistant Professor. 18th–20th century European art.

SHIRINE HAMADEH, Ph.D. MIT. Assistant Professor. Islamic/Middle Eastern art and architecture.

SHIH-SHAN SUSAN HUANG, Ph.D. Yale University. Assistant Professor. Medieval Chinese art and religion.

GORDON HUGHES, Ph.D. Princeton University. Assistant Professor. Modern and contemporary European and American art.

FRANCESCA LEONI, Ph.D. Princeton University. Postdoctoral Fellow in Art History, in collaboration with the Museum of Fine Arts, Houston. Middle Eastern/Islamic art.

JOSEPH MANCA, Ph.D. Columbia University. Nina J. Cullinan Professor of Art and Art History. Renaissance and Baroque art in Europe; early American art and architecture.

LINDA NEAGLEY, Ph.D. Indiana University. Associate Professor. Medieval art and architecture.

LIDA OUKADEROVA, Ph.D. University of Texas at Austin. Visiting Assistant Professor of Film Studies; Russian and German film and literature.

CAROLINE QUENEMOEN, Ph.D. Yale University. Assistant Professor. Classical Greek and Roman art and architecture.

DIANE WOLFTHAL, Ph.D. New York University, Institute of Fine Arts. David and Caroline Minter Professor of the Humanities. Late medieval and early modern Europe; Jewish Studies; and Gender Studies.